



# T640 Series

DC-Operated Tilt Sensor with unfiltered and low pass filter outputs

## Features

- Ranges  $\pm 30^\circ$ ,  $\pm 60^\circ$  and  $\pm 90^\circ$
- Essentially zero temperature coefficient of damping ratio
- Filtered and unfiltered outputs simultaneously available
- Integral temperature compensation
- DC input - DC output
- Signal ground isolated from power ground
- High reliability

## Benefits

- High accuracy
- $-40^\circ\text{C}$  to  $+100^\circ\text{C}$  temp rating
- Integral temperature compensation
- High reliability

## Applications

Data acquisition systems

Structural monitoring

Road bed analysis

Pipeline levelling

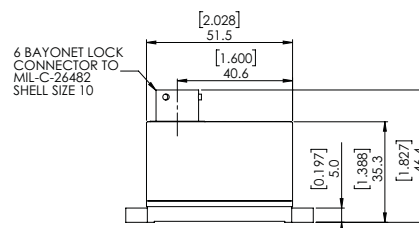
Platform levelling

Ship ballast transfer systems

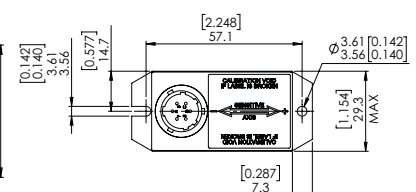
## Electrical Connections

Pin A	+ Supply
Pin B	0v Supply
Pin C	Signal ground
Pin D	Signal output (filtered)
Pin E	Signal output (unfiltered)
Pin F	Not connected

SIDE VIEW



PLAN VIEW



## Specifications

### Specifications by Range @25°C

		± 30°	± 60°	± 90°
Output Impedance	Ω (nom)		1Ω	
Non-linearity (see note 2)	% FRO (max)		±0.5%	
Hysteresis			0.02%	
Resolution			0.001%	
Damping Ratio			0.7 (±0.2) @ 25°C	
Output Impedance			1Ω	
Filtered output response			-3dB at 5Hz, 2-pole	
Cross-axis Sensitivity (see note 3)	% FRO (max)		± 1	
Zero Offset (see note 4)	Volts dc (max)		±2%	
Thermal Zero Shift	%FRO/°C (max)		±0.03%	
Thermal Sensitivity Shift	%Reading/°C (max)		±0.03%	
Weight	Grams (max)		120	

### Electrical

Full Range Output (FRO) (see note 1)	Volts dc	±5V dc ±2%
Input Voltage	Volts dc	+6 to 32Vdc Unregulated
Input Current	mA dc (max)	100

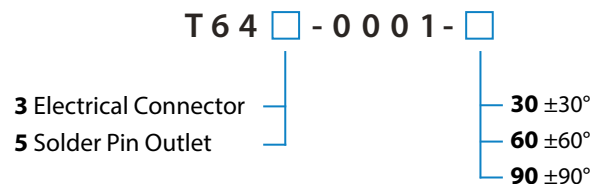
### Environmental Characteristics

Operating Temperature Range °C	-40 to 100
Compensated Temperature Range °C	0°C to 50°C
Storage Temperature Range °C	-55°C to 130°C
Shock Survival	200g for 2ms (½ sine wave)
Insulation Resistance	20 MΩ at 50V dc

## Notes

1. Full Range Output is defined as the full angular excursion from positive to negative, i.e. ±90° = 180°.
2. Non-linearity is determined by the method of least squares.
3. Cross-axis Sensitivity is the output of unit when tilted to full range angle in cross-axis.
4. Zero offset is specified under static conditions with no vibration inputs.

## Model Designation & Ordering Code



Please specify Mating Connector  
3CON-0009 if required

+44 (0)1256 630 300

sales@sherbornesensors.com

www.sherbornesensors.com



© 2019 Sherborne Sensors Limited. Version 1